

RADAR

HLD-RADAR 300



FULLY AUTOMATIC WORKING RADAR

Complies with the following regulations:

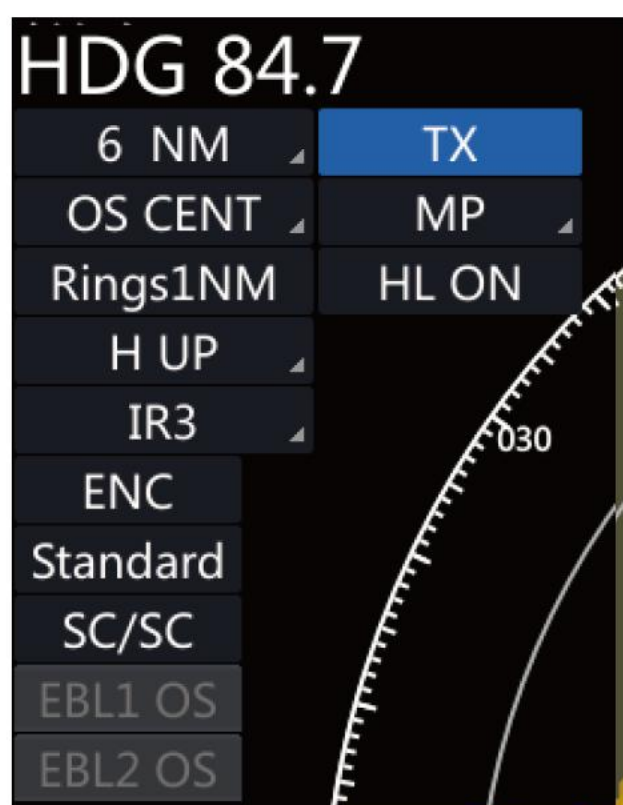
IEC 60945:2002/COR1:2008

Chapter 5, Chapter 6 of the Statutory Survey Rules for Ships and Offshore Installations – Technical Rules for Statutory Survey of Inland River Vessels (2019), Maritime Safety Administration of the People's Republic of China

Chapters 1 and 2 of the Technical Rules for the Statutory Survey of Domestic Marine Fishing Vessels (2019), Maritime Safety Administration of the People's Republic of China, and its Amendment Circular

On-board all-in-one machine

Newly launched



» Features

DIM Auto-Dimming
Co-frequency rejection
Target Tracking (Manual/Automatic, Target Capture & Tracking)
Use the cursor to measure bearing, distance, and position
Distance is measured with a fixed pitch ring/VRM (variable pitch collar)
Measure the bearing with EBL (Electronic Azimuth Line)
Auxiliary routes, parallel lines, and markers are displayed
True Motion Mode
Relative motion mode
Self-diagnosis function
Voice Announcement
Use scene customization
Vector and trail display
Central alarm display
IP camera access
Integrated navigation information display
ENC Nautical Charts/River Charts (optional function)
Performance Monitor(Optional)



Convenient Radar For Inland Waterway Boats

Easy and Convenient Installation

» Dimensional Drawings

[Antenna HLD-AT104] Weight:5kg



[Antenna HLD-AT106] Weight: 7kg



[Antenna HLD-AT108] Weight: 9kg



[On-board all-in-one machine HLD-MCS215]



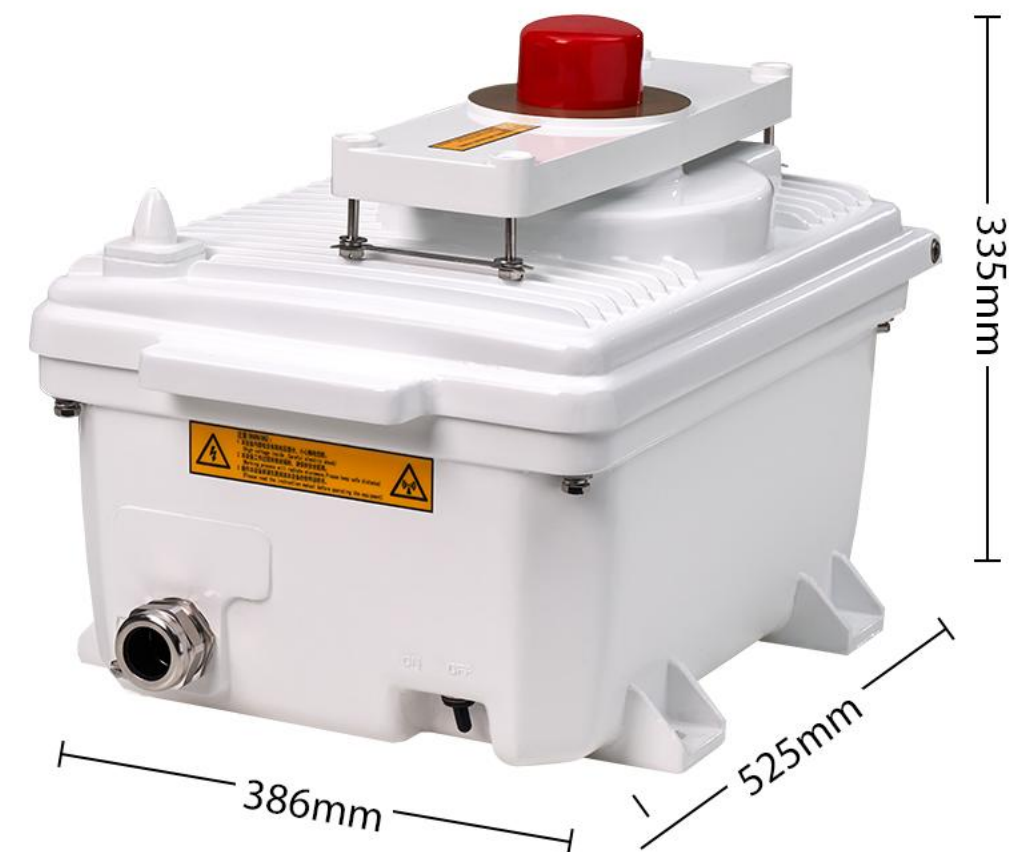
[Main Control Unit HLD-MCS219]



[Human-machine Interaction Unit HLD-IU600 3kg]



**[Transceiver Unit HLD-TU106 /TU110]
Weight: 32kg**



Name	Specification	Length mm	Depth mm	Height mm	Weight kg
On-board all-in-one machine	HLD-MCS215	451	70	302	4.5
Main Control Unit	HLD-MCS219*	378	70	462	3.5

*Equipped with human-machine interaction unit

HLD-RADAR 300 Configuration

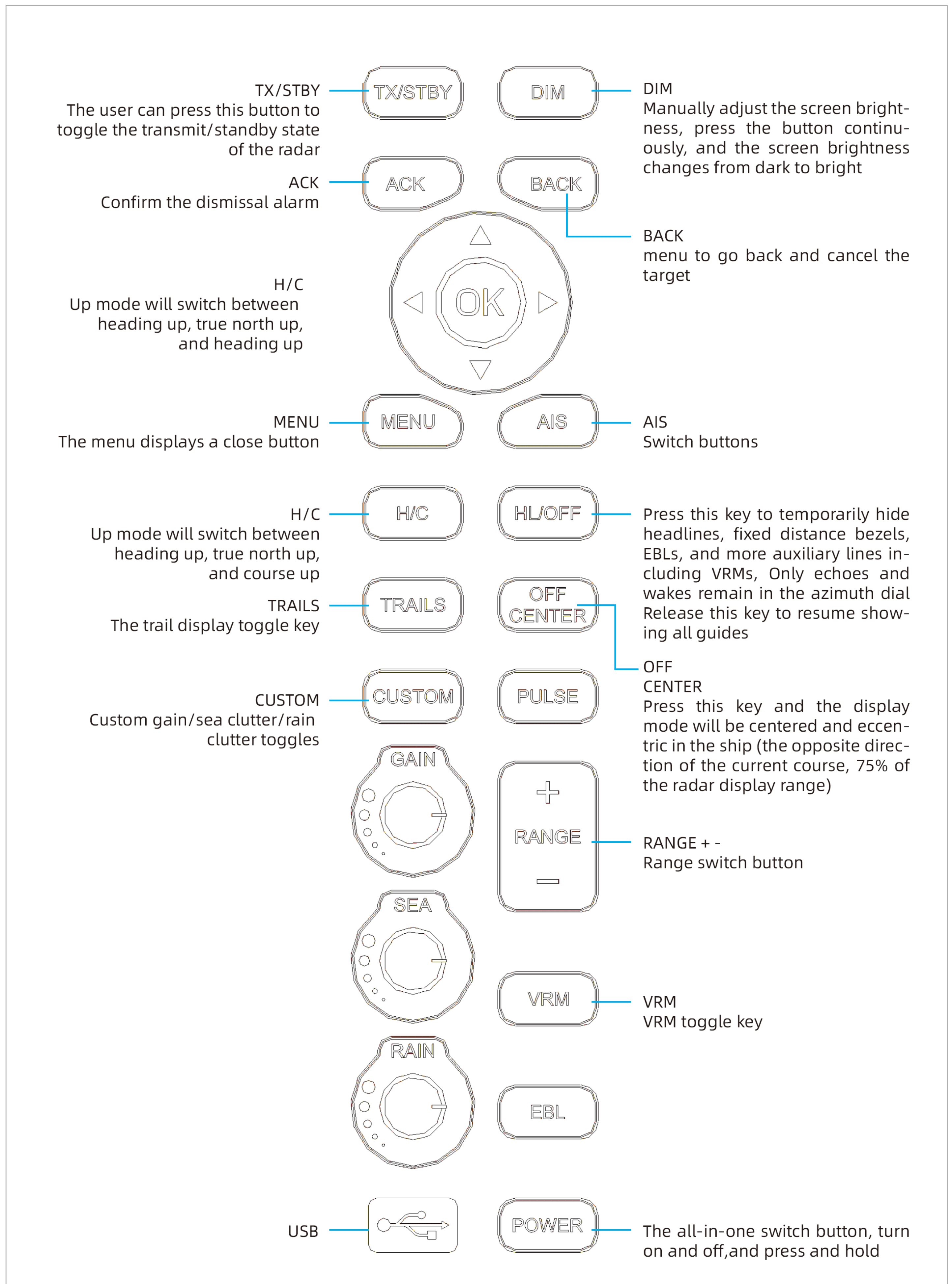
Standard

Antenna	HLD-AT104/106/108
Transceiver Unit	HLD-TU106/110
On-board all in-one machine	HLD-MCS215 HLD-MCS219 (Equipped with human-machine interaction unit)

Optional

HMI Unit	HLD-IU600
----------	-----------

» Introduction to common functions



System Connection Diagram



» Technical Specifications

Frequency Band		X-Band		
		HLD-AT104	HLD-AT106	HLD-AT108
Antenna Length		4ft	6ft	8ft
Peak Transmission Power		6kw/10kw/25KW		
Beam Width	Horizontal	2°	1.3°	1.0°
	Vertical	24°		
Antenna Rotational Speed		24 rpm or 40 rpm		
Operating Frequency		9410±30MHz		
Pulse Width & Repetition Frequency	Short	0.05μs/1800Hz or 3000Hz		
	Medium	0.25μs/1800Hz		
	Long	0.75μs/785Hz		
	Ultra long	1.2μs/500Hz		
Intermediate Frequency		60MHz		
Anti Clutter	Sea	Manual/Automatic		
	Rain	Manual/Automatic		
Gain Control		Manual		
Display Resolution (15")		1024*768		
Display Resolution (19")		1280*1024		
Display Mode	Motion	TM, RM		
	Heading	H Up, N Up, C Up, T Up		
Display Range		0.125-96 nm		
ARPA Target capture		Up to 60		
Auto Acquisition of Targets		Provided, 2 warning zones		
AIS Target Activity		Up to 60		
AIS ARPA Target associations		Provided		
Chart radar function		Optional		



Jiangsu Highland Integration Technology Co., Ltd. Jiangsu Tusuo Ocean Technology Co., Ltd.

Add: No.199, Qingfeng Road, Sutong Science & Technology Industrial Park,
Nantong City, Jiangsu Province, China

Tel: +86 513 80582989 Fax: +86 513 80582929

Website: www.highlander.com.cn Post code: 226017