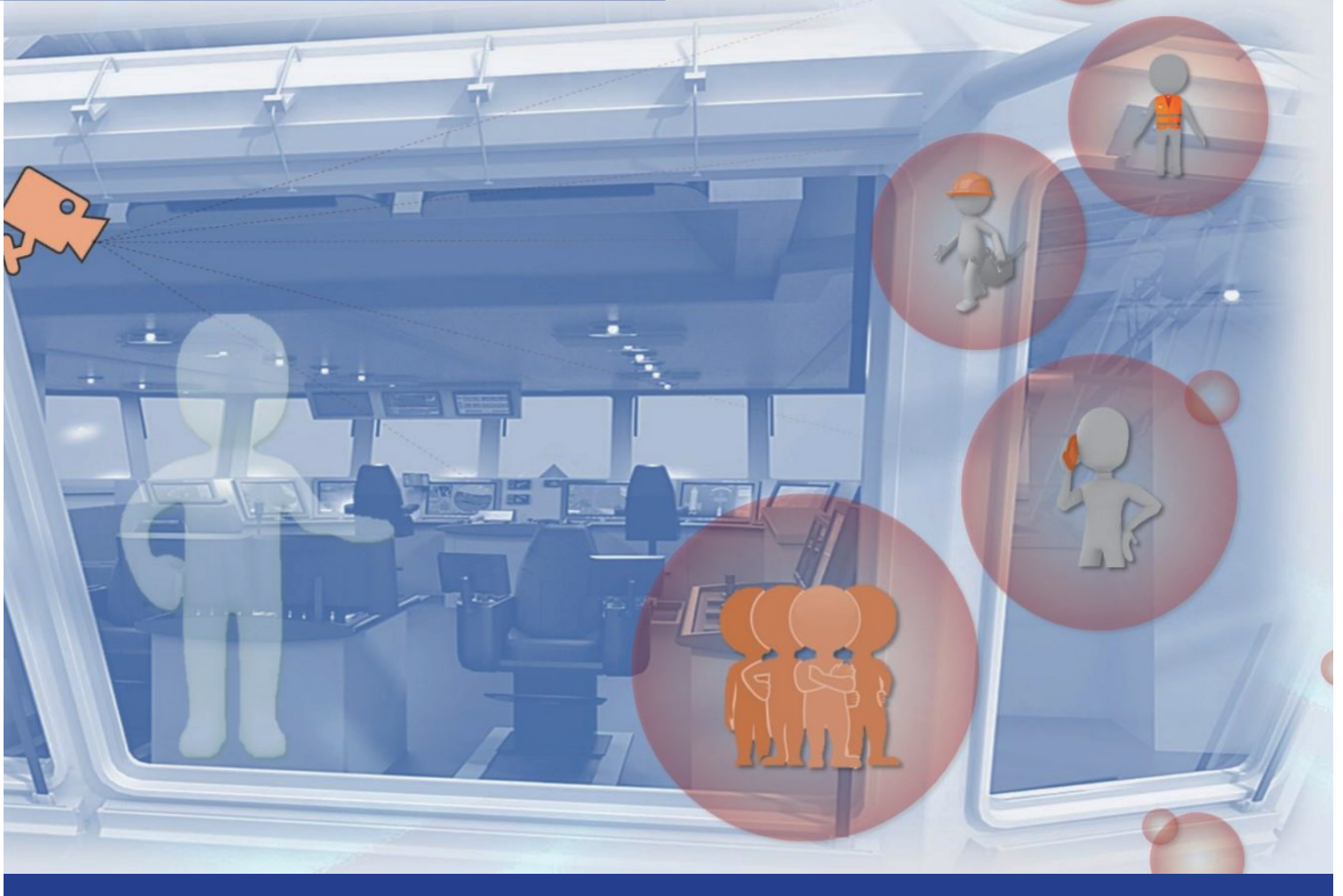


i-COMMANDER V2

HLD-SVS600



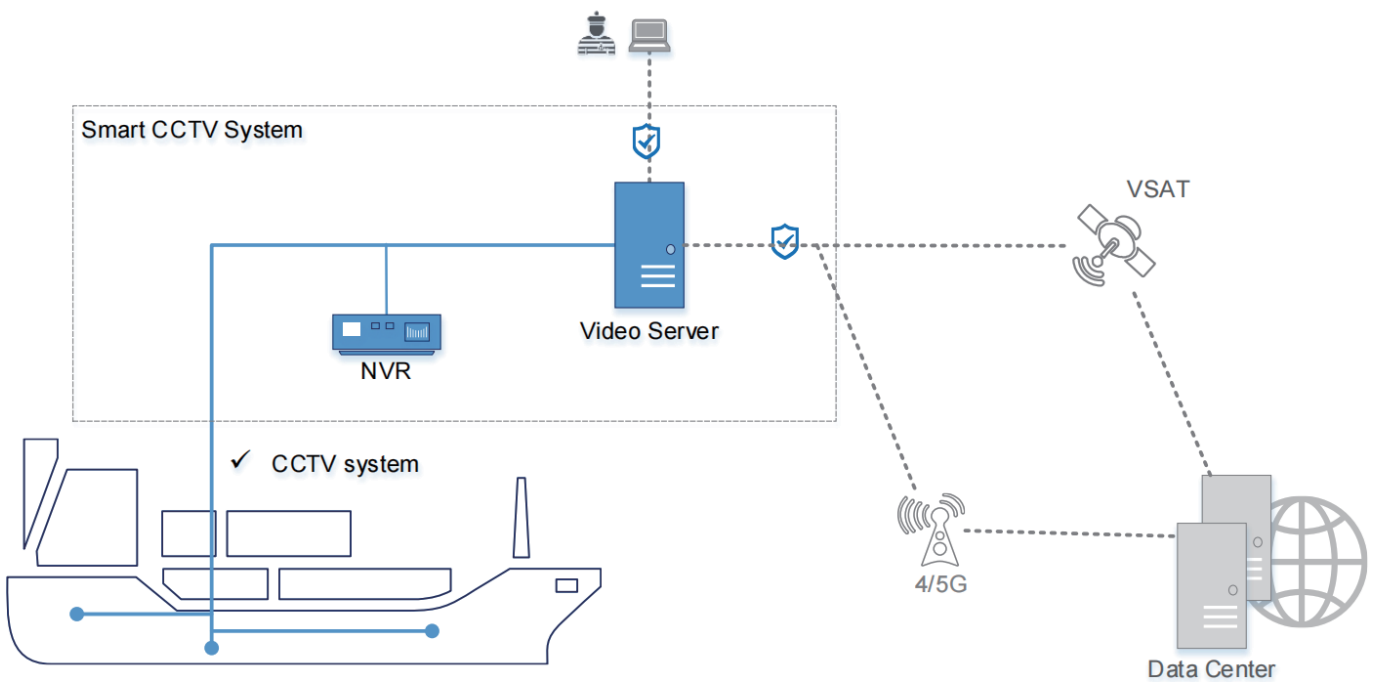
INTELLIGENT CCTV SYSTEM

INTELLIGENT CCTV SYSTEM

A.Architecture

The intelligent CCTV system monitors the working conditions of the crew 24 hours through conventional cameras. The system analyzes the actions and behaviors of the personnel in combination with the working scene, identifies the violations and gives timely warnings.

The system can be seamlessly integrated with the Highlander intelligent integration platform, and after integration, the network and server computing resources of the platform can be shared to meet the requirements of digital security.



■ B. FUNCTOINS

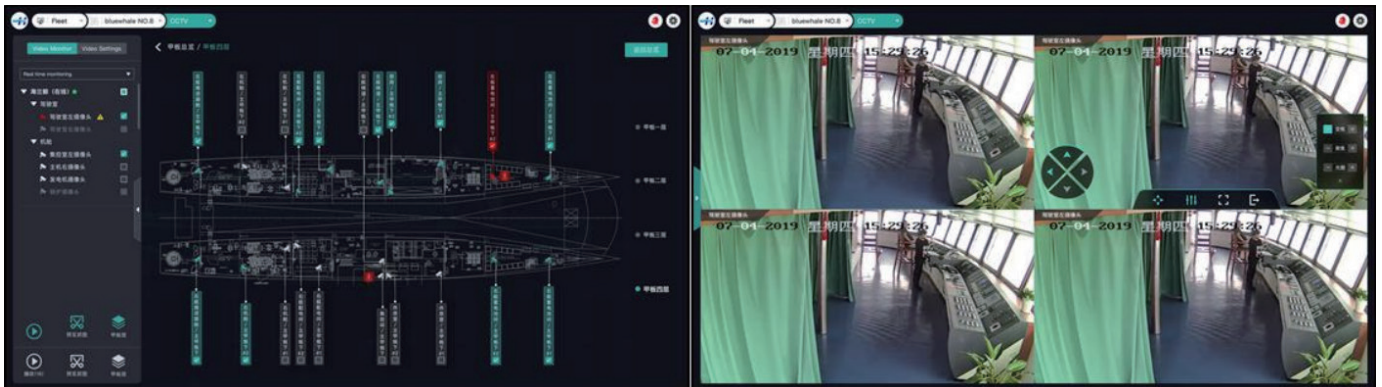


H.264
H.265

- The system supports H.264/H.265 video streaming.
- The system can analyze personnel behavior in real time and provide confirmation function for important behavior alarm.
- The system supports single sign-on (SSO), which makes the system more secure.
- The system supports operations in both Chinese and English to meet the user's usage habits.

■ CCTV

The system collects ship-end video stream and provides real-time monitoring function. The system supports video playback by web browser. Support to retrieve the historical video in the hard disk recorder for playback. Supports the control of camera angle, picture and focal length.



■ Behavior recognition

The system synchronizes information with the shipside personnel behavior identification system, which can identify and supervise the actions and behaviors of the shipside personnel.

The system can recognize the behaviors of different scenarios of navigation safety and personnel safety system.

Navigation safety

- Combined with the duty plan, it counts the number of people on duty in important places (mainly bridge and control room).
- Supports the identification of prolonged personnel immobility.
- It can judge whether personnel are paying attention to mobile phones by their actions.
- Can be combined with personnel smoking identification .

Personnel safety

- Supports the identification of whether crew members are wearing protective equipment such as work clothes, helmets, masks.
- It can recognize when people enter specific areas without wearing gas masks or protective glasses.
- Alerts / Detects the intrusion of personnel into dangerous areas.
- Supports detection of personnel falling over railings and other dangerous behaviors, with automatic warnings.
- Supports fighting behavior identification and provides early warning.



C.CONFIGURATION

Device	Description
Hardware	
CCTV	
Core switch	Full gigabit, 24 ports
Data server	8 cores CPU 16G MEM 1T SSD
Software	
HLD-SVS600	CCTV video surveillance, personnel behavior analysis and early warning

24

Hours
服务热线

Tel: 400 088 3335 / +86 513 8058 2906
E-mail: radar@highlander.com.cn
service@highlander.com.cn

Jiangsu Highland Integration Technology Co., Ltd. Jiangsu Tusuo Ocean Technology Co., Ltd.

Add: No.199, Qingfeng Road, Sutong Science & Technology Industrial Park, Nantong City, Jiangsu Province, China

Tel: +86 513 80582989

Fax: +86 513 80582929

Website: www.highlander.com.cn

Post code: 226017